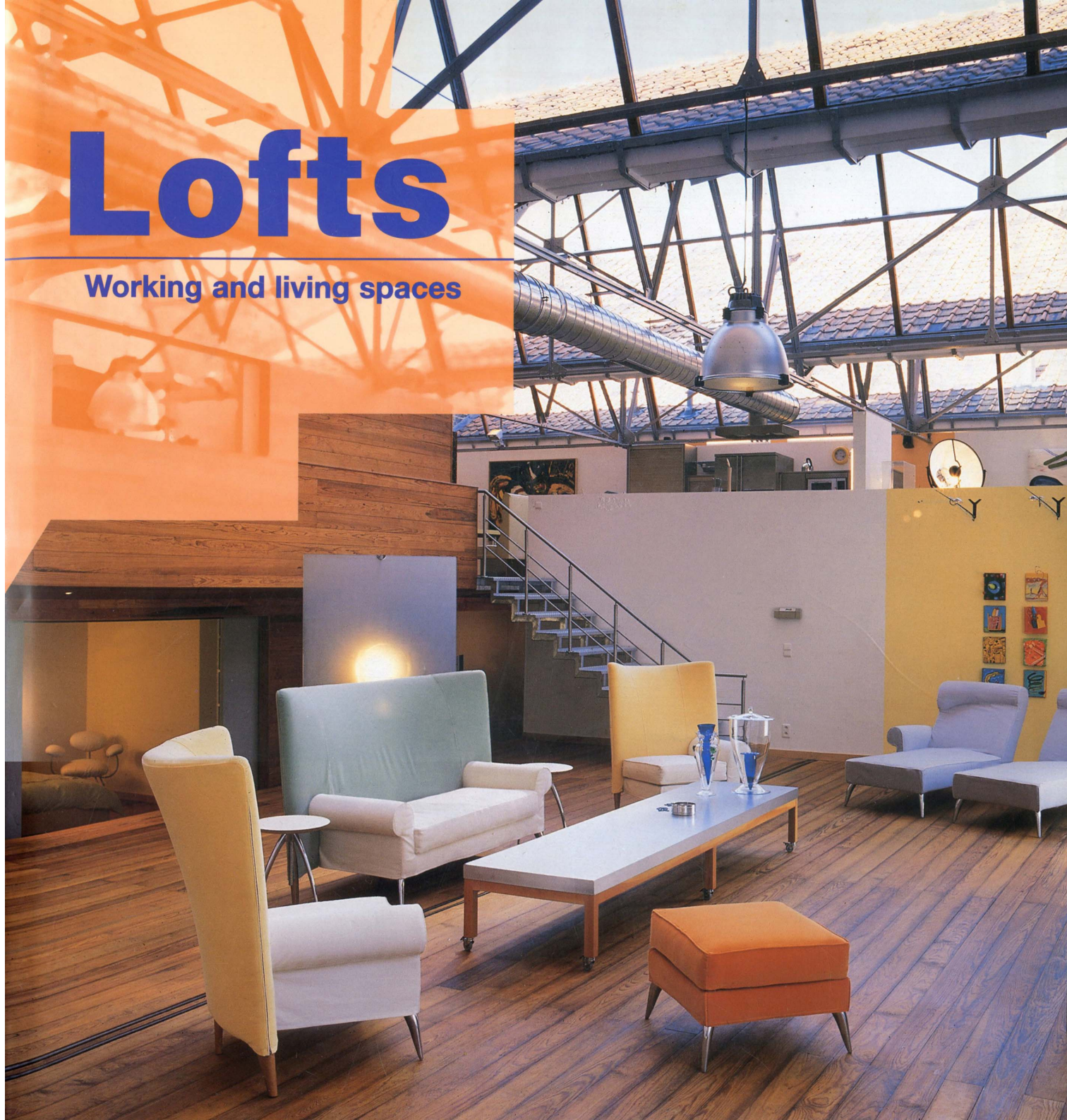


Lofts

Working and living spaces



84 White and Void

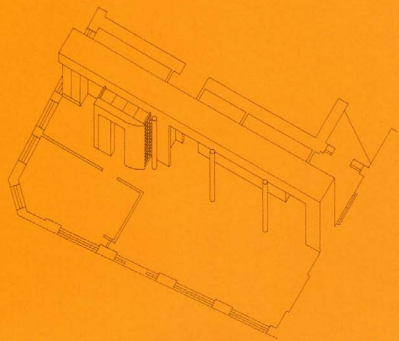
Underwood Street Loft

Hugh Broughton Architects

► Four interconnected, former industrial buildings, facing onto Shepherdess Walk and Underwood Street, had been converted to provide warehouse-style apartments. Each loft was fitted out with the bare essentials of water, electricity, gas, kitchen sink, toilet, and hand basin. A lobby was built at the entrance of each loft to satisfy building regulations.

In the 1,600-square-foot loft of the second floor of Building 4, Hugh Broughton Architects have created a restrained and crisply detailed apartment with open-plan living space, kitchen, and dining area. Bedrooms and bathrooms have been enclosed to create privacy. A linear spine with a lower suspended ceiling hides the electrical and ventilation services from view.

The spine divides the living room and bedrooms from the more utilitarian spaces—the kitchen, hall, cloakroom, and bathroom. The bathroom protrudes from the spine with a knife-shaped wall, accentuating the sculptural impact on the open-plan areas. This wall thickens out to create a concealed cupboard space. When the door to the cupboard is opened, it screens the second guest bedroom from the living area. The ceiling to the protrusion is lower than the open-plan areas and is finished in white laminated glass, allowing a diffuse light to illuminate the plastered ceiling above.



LOCATION: Underwood Street, London.

CLIENTS: Dominic and Emma Good.

COST: £ 35,000.

AREA: 1,590 sq. ft. (148 sq. m).

COMPLETION DATE: 1997.

DESIGN TEAM: Hugh Broughton Architects.

GENERAL CONTRACTOR: Summit Views.

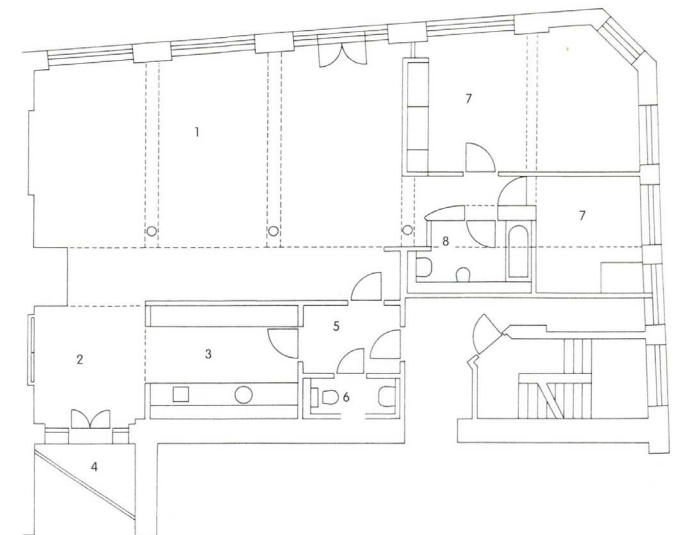
PHOTOGRAPHY: Carlos Domínguez





It is in the living room, the kitchen, and in the dining room where it is easiest to notice the industrial past of the building, both because of its diaphanous aspect and because of the brick walls and the cast iron pillars. Doors have not been put into this zone. There is continuity between the kitchen and the dining room. The lounge has been separated visually from the kitchen with a wall which does not break the spatial fluidity.

A restrained palette of new materials—white walls and ceilings, and an acid-etched glass-block wall—compliment the richness of the original brickwork and the Opepe African hardwood floors to create a dynamic and welcoming living environment.



General floor plan.

1. Living area
2. Dining area
3. Kitchen
4. Balcony
5. Hall
6. Toilet
7. Bedroom
8. Bathroom